



Florida Department of
TRANSPORTATION

I-DRIVE & SAND LAKE ROAD CONSTRUCTION

FPID: 407143-4-52-01

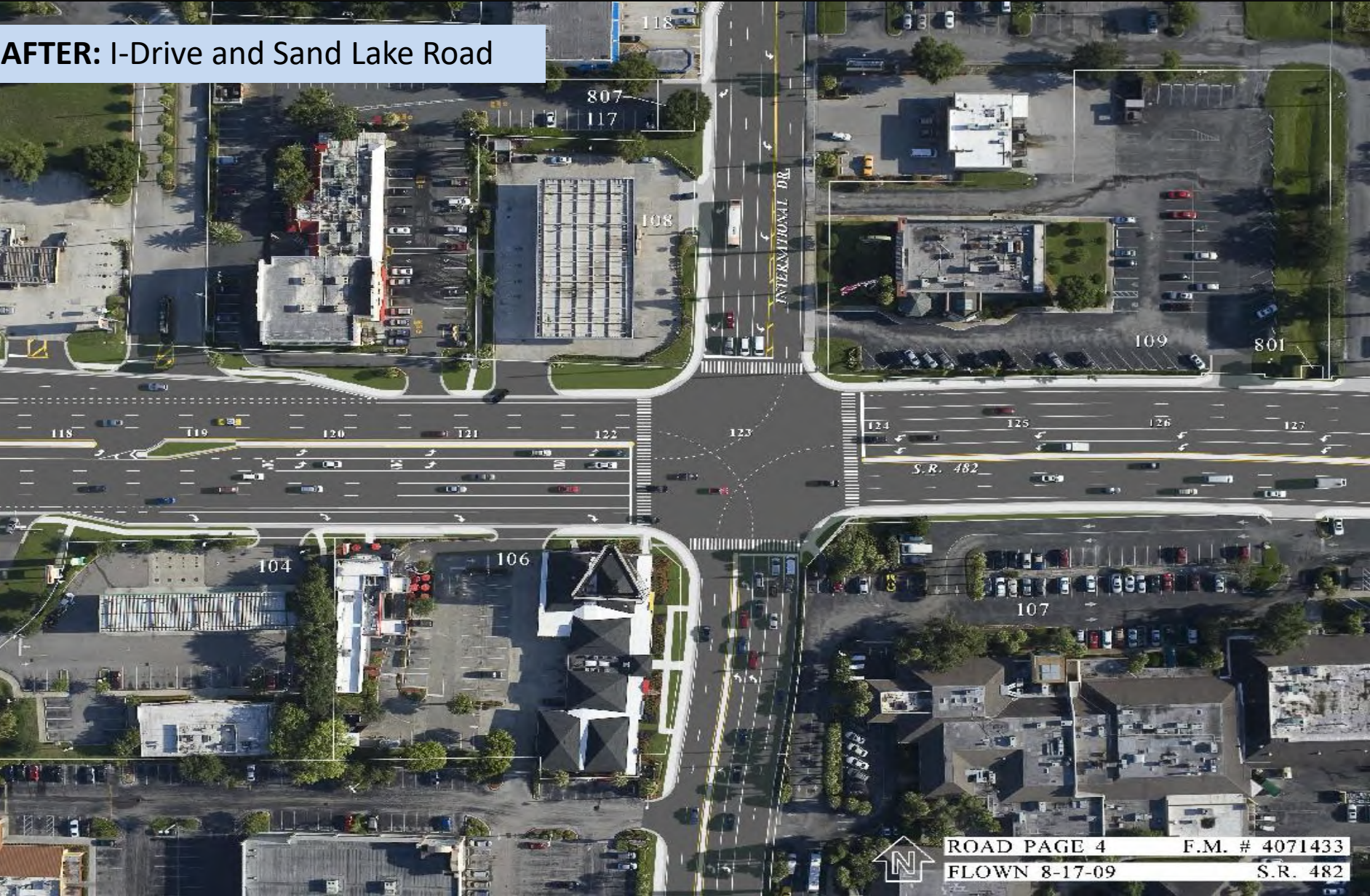
State Road 482 (Sand Lake Road) from West of International Drive to Universal Boulevard and International Drive from Jamaican Court to North of Sand Lake Road



Sand Lake from I-Drive to Universal Blvd.

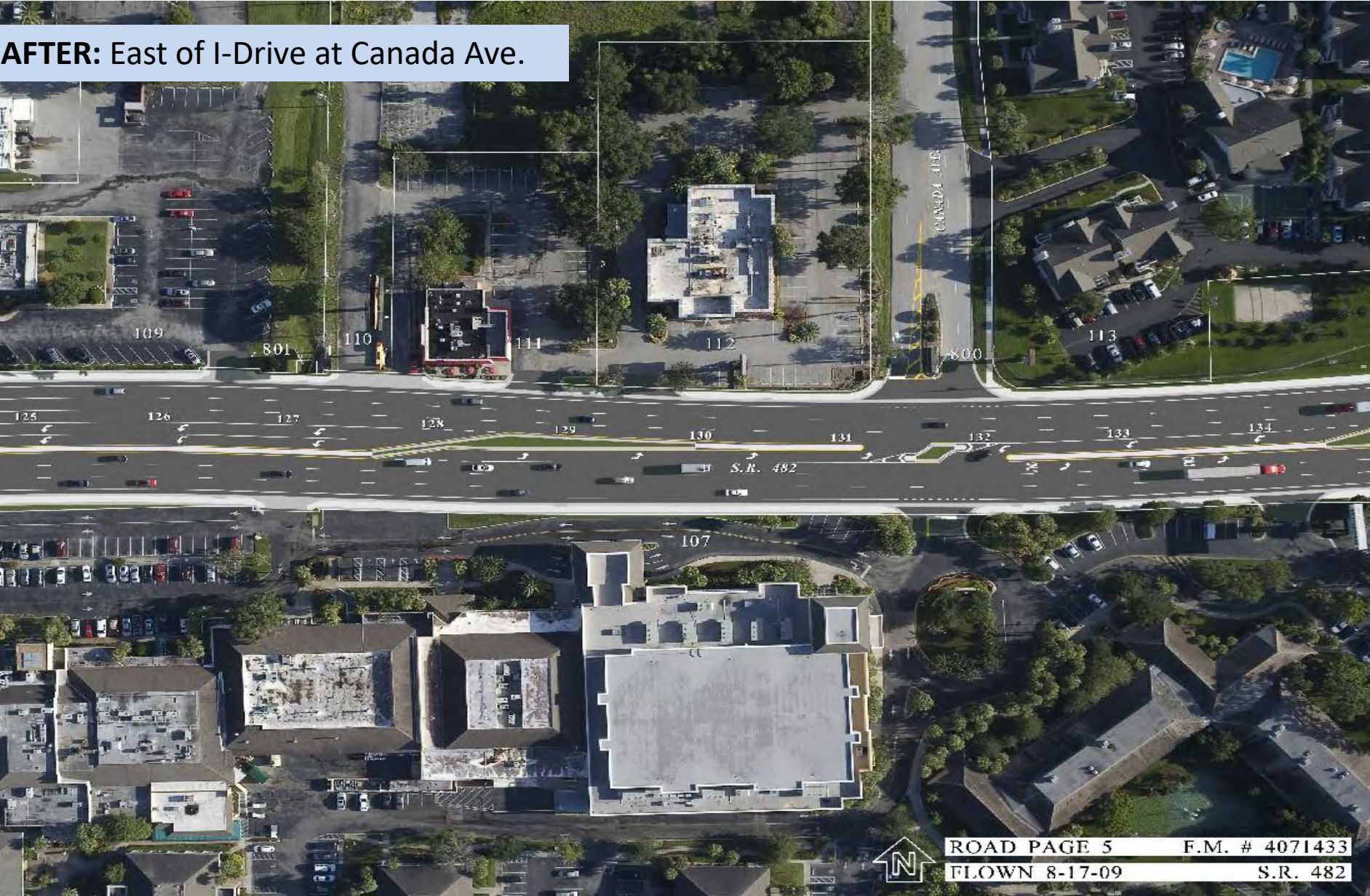
- Widening from I-Drive to Universal Blvd to create three (3) eastbound & three (3) westbound thru lanes
- New sidewalk (ongoing)
- New driveways (ongoing)
- New storm sewer and sanitary sewer (complete)
- Asphalt base and structural asphalt (upcoming)

AFTER: I-Drive and Sand Lake Road



ROAD PAGE 4 F.M. # 4071433
FLOWN 8-17-09 S.R. 482

AFTER: East of I-Drive at Canada Ave.



ROAD PAGE 5 F.M. # 4071433
FLOWN 8-17-09 S.R. 482

AFTER: East of I-Drive at Universal Blvd.



ROAD PAGE 6 F.M. # 4071433
FLOWN 8-17-09 S.R. 482

Bus bay construction on Sand Lake Rd. near Universal Blvd.



Sidewalk and curb on Sand Lake Rd. near Universal Blvd.



Sidewalk and curb on Sand Lake Rd. near Universal Blvd.



Sidewalk and curb on Sand Lake Rd. near Universal Blvd.



Sidewalk and curb on Sand Lake Rd. near I-Drive



Sidewalk and curb on Sand Lake Rd. near I-Drive



Sidewalk and curb on Sand Lake Rd. near I-Drive



Sidewalk and curb on Sand Lake Rd. near I-Drive



Sidewalk and curb Sand Lake Rd. near I-Drive



Sidewalk, curb and drainage work on Sand Lake Rd. near I-Drive



Sidewalk on north I-Drive near McDonald's



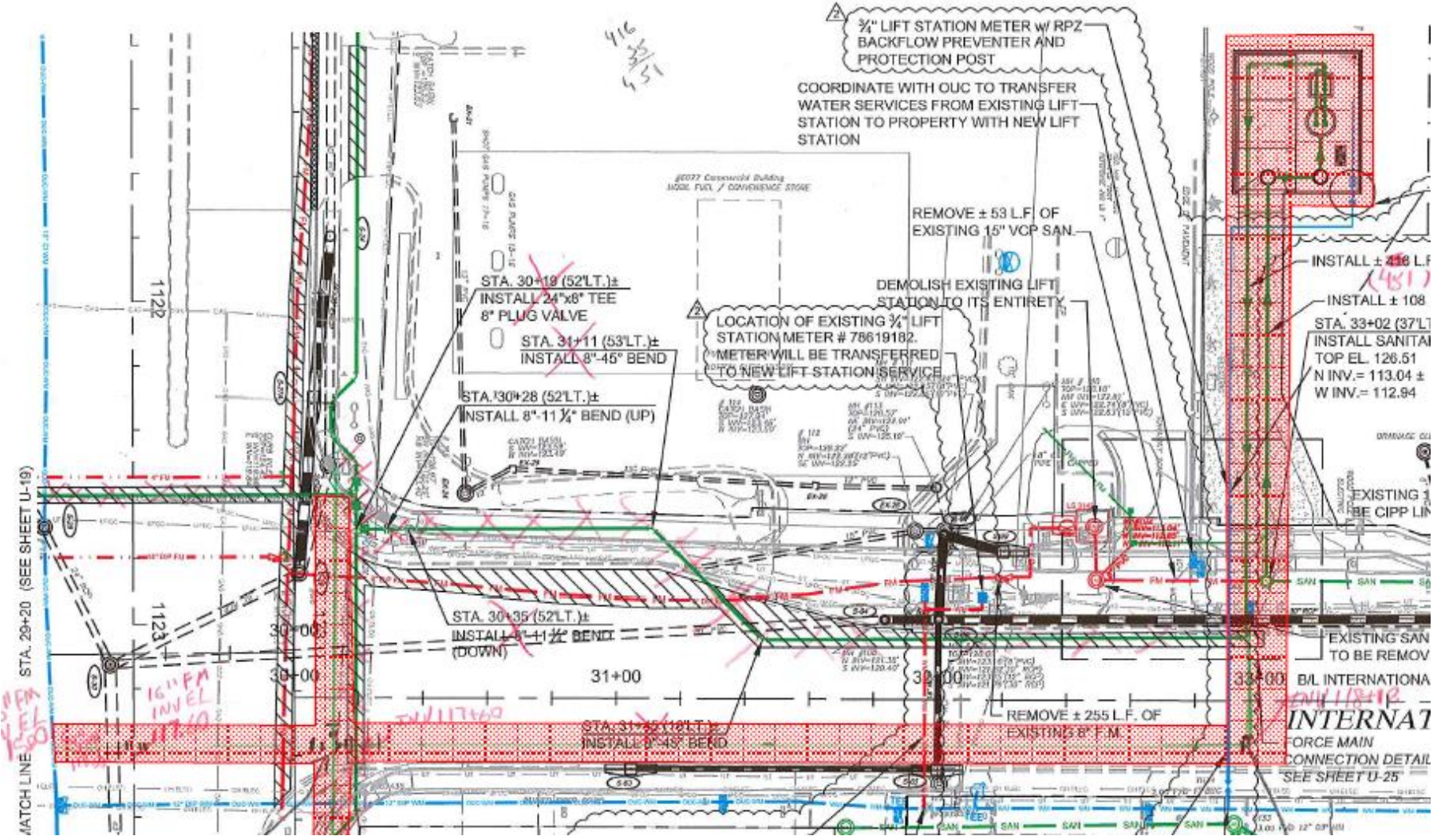
Ongoing construction on north I-Drive



Lift station on north I-Drive



PHASED CONSTRUCTION: Sanitary sewer & lift station on I-Drive





Florida Department of
TRANSPORTATION

QUESTIONS?

